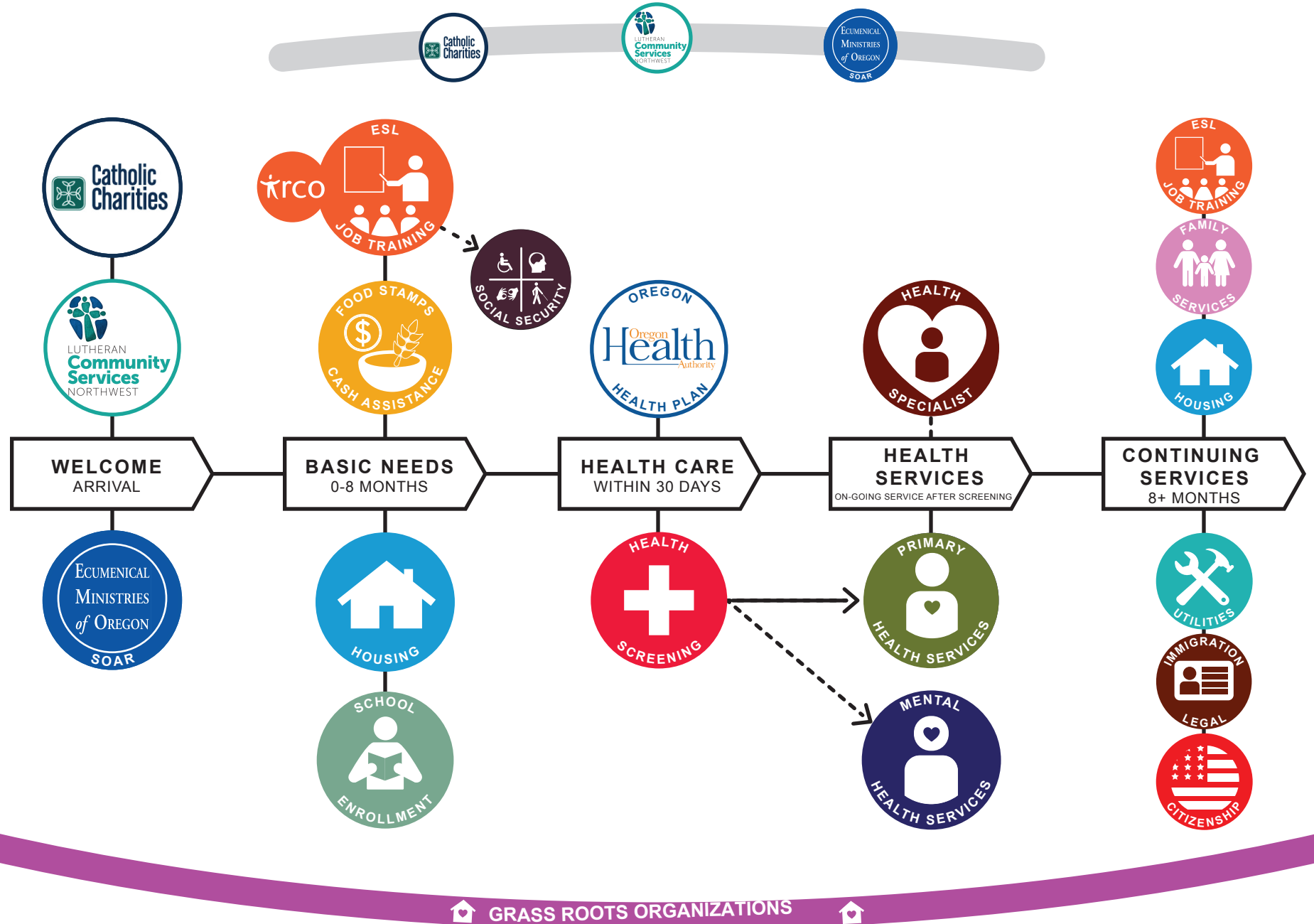


# Oregon Welcomes You



Supported by:



**PATHWAYS  
TO  
WELLNESS**  
Integrating Refugee Health and Well-Being



## CONTINUING SERVICES

### 8+ MONTHS

[illegible]

LUTHERAN  
**Community  
Services**  
NORTHWEST

**For additional resources including crisis services: Call 2-1-1**