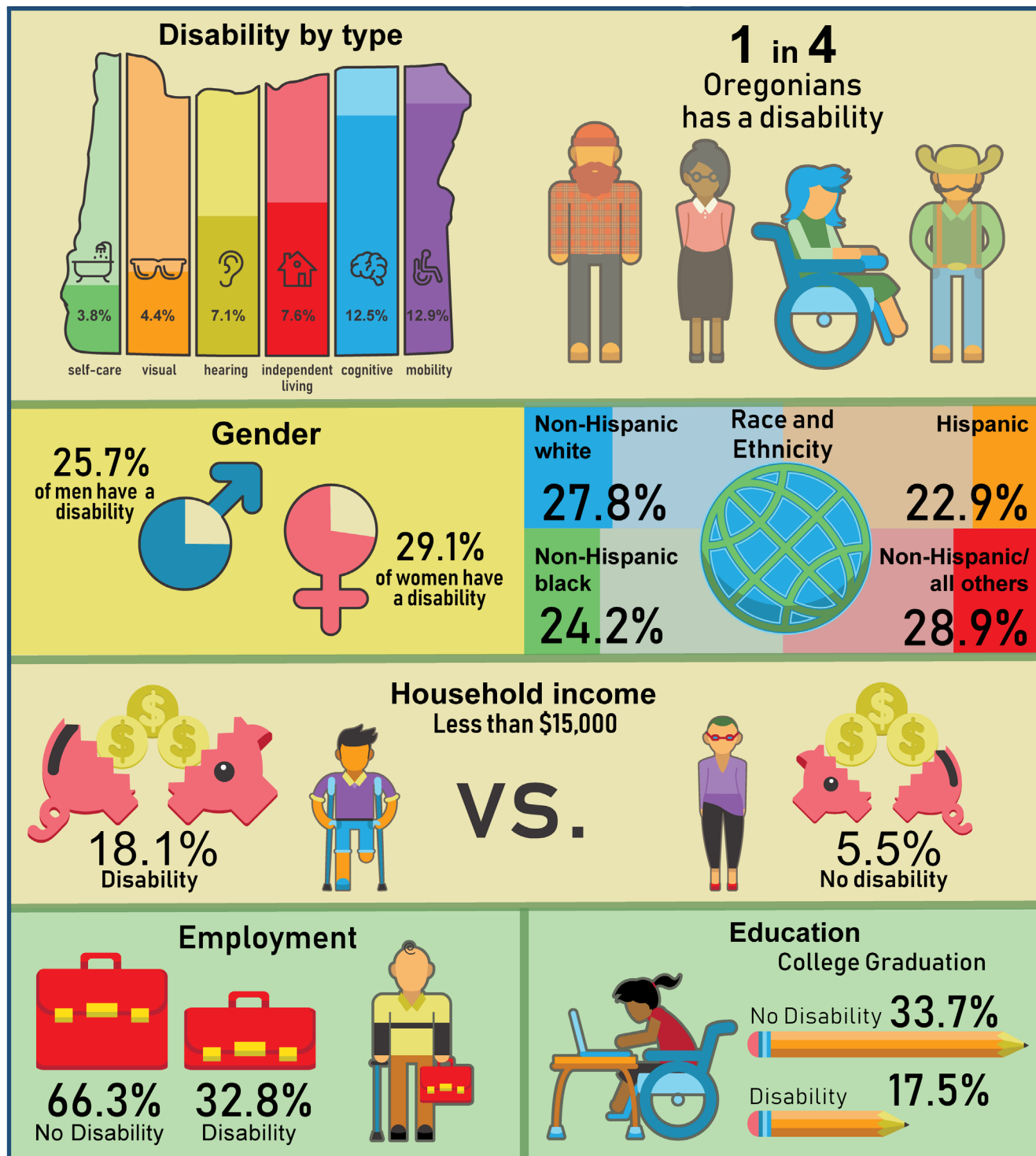




# Oregon Office on Disability and Health



Data Source: Oregon Behavioral Risk Factor Surveillance System (BRFSS) 2018.



@OregonOfficeonDisabilityandHealth

<https://www.ohsu.edu/oodh>



# Oregon Office on Disability and Health

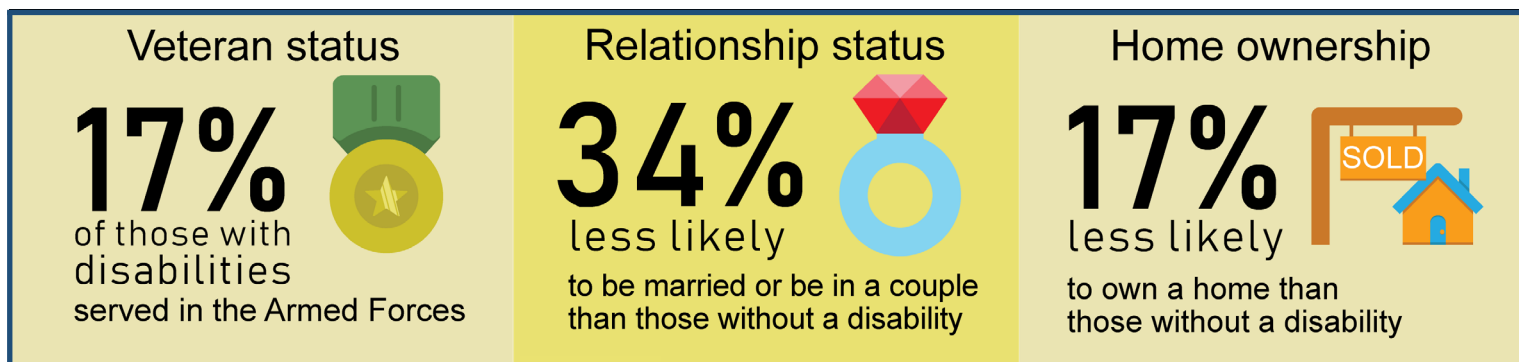


## About OODH:

The Oregon Office on Disability and Health (OODH) is a public health entity under the Institute on Development and Disability at Oregon Health & Science University. OODH has been funded since 1994 by the Centers for Disease Control and Prevention. Our mission is to promote the health and wellness of people with disabilities in Oregon. We envision a future where entire communities are accessible, welcoming and inclusive of all Oregonians.

## About disability data analysis:

OODH analyzes data to educate and inform key community, county and state partners and policy makers on the importance of inclusive policies, systems and environments such as affordable and accessible health promotion and health care, and accessible outdoor recreation opportunities for Oregonians with disabilities. By comparing information gathered by the Behavioral Risk Factor Surveillance System (BRFSS) on Oregonians, we can determine current gaps in social determinants of health among adults with disabilities in comparison to those without disabilities.



Data Source: Oregon Behavioral Risk Factor Surveillance System (BRFSS) 2018.

This project was supported by Cooperative Agreement Number NU27DD000014 from the Centers for Disease Control and Prevention (CDC). Its contents are solely the responsibility of the authors and do not necessarily represent the official views of CDC. This brief was prepared by Cesar Higgins Tejera, MPH; Larissa Yoshino, MPH; West Livaudais, MPH; Amy Jeon; and Willi Horner-Johnson, PhD in the Oregon Office on Disability and Health (OODH).

## COPYRIGHT INFORMATION

This report may be reproduced or copied without permission, and we encourage you to share it. Use of the following citation is appreciated:

Oregon Office on Disability and Health. Demographics of Oregonians with Disabilities 2018. Portland, OR: Oregon Health & Science University; 2020. Available from <http://www.ohsu.edu/xd/research/centers-institutes/oregon-office-on-disability-and-health/data-statistics/>