

For employees commuting to work sites in the Portland metro area, OHSU offers Guaranteed Ride Home, loaner bikes and subsidies, discounted bus and light rail, free streetcar and aerial tram, cash incentive and more rewards.

Plan your best commute

What we'll cover today

ohsu.edu/COMMUTE



OHSU's unique commute

MyCommute services

Overview of your options

Helping patients and visitors

Next step and questions

OHSU's Main Campus

Marquam Hill and South Waterfront

[OHSU.EDU/VISIT](https://www.ohsu.edu/visit)



OHSU is a regional employer and medical destination visited by up to 20,000 people daily. With only two narrow roads to central campus congestion reduction is vital for our neighbors, patients, emergency access, and you.

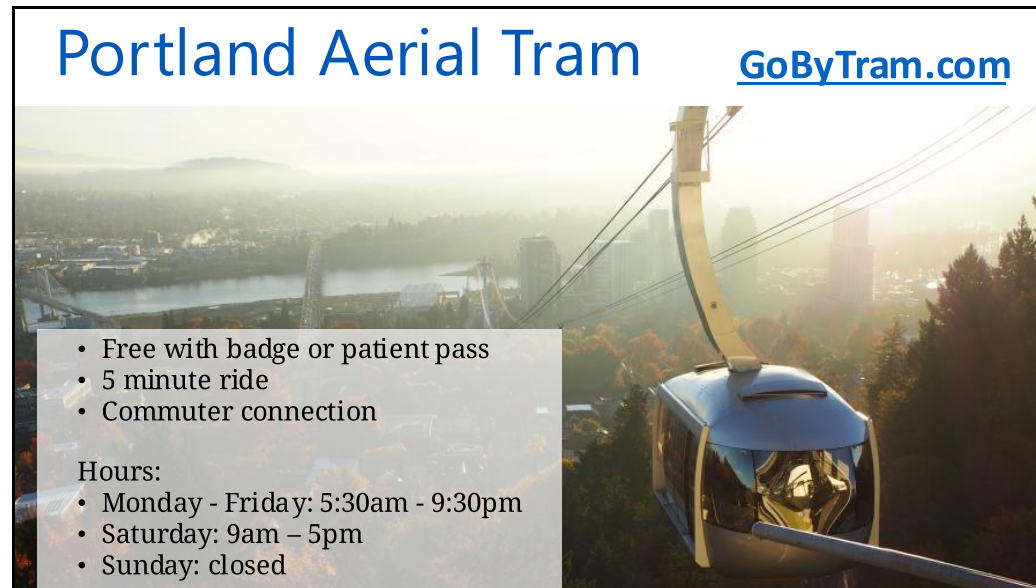
Marquam Hill:

- Largest campus
- Highest elevation
- Served by a number of bus lines

South Waterfront:

- Fastest growing district
- More and diverse transportation options

The hill and waterfront both are constrained by 2 lane roads. Both are also connected by Portland Aerial Tram.



The Tram connects South Waterfront to Marquam Hill via S. Moody & Gibbs on the waterfront and Kohler Pavilion on the hill.

Access:

- The Tram is **ADA-compliant** and welcomes mobility-assistance devices.
- **Service animals** are welcome on the Tram. Non-service animals are not permitted.
- **Bikes** are welcome on board. Free bike valet is located at the lower terminal.

Fare:

- Patients and their visitors may request courtesy tickets from their clinic or any OHSU concierge desk.
- People with an OHSU badge can use their badge as eligible fare on the Tram.
- If your badge is forgotten, get a temporary badge at our Rood Family Pavilion customer service center.
- Fares for the general public: gobytram.com/fare. Kids 6 and under ride free.

Trip planning

Request a custom plan

All major modes

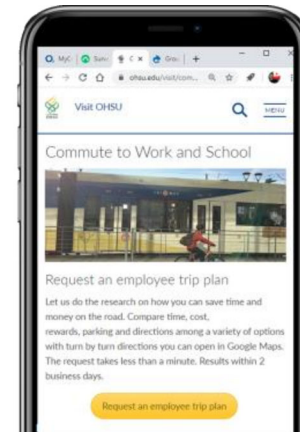
Turn by turn directions

Estimated travel time

Maps

Incentives and resources

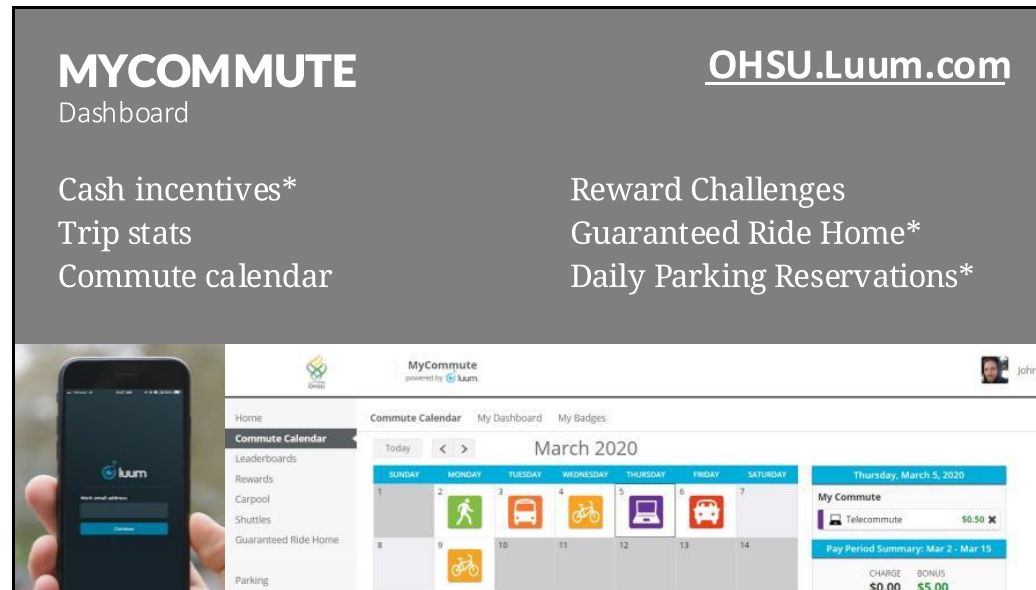
[ohsu.edu/](https://ohsu.edu/commute)**COMMUTE**



Let us do the research on how you can save time and money on the road. Compare time, cost, rewards, and directions among a variety of options. The request takes less than a minute.

You will receive a plan in a couple business days. Request a plan at www.ohsu.edu/commute

If you have questions and would like to talk to someone, a personal consultation can be coordinated by emailing commute@ohsu.edu



MyCommute is a program for people traveling to OHSU for work and education to earn rewards for how they commute.

- If your work location is within the TriMet service area, you are eligible for MyCommute.
- MyCommute is available via the Luum App or on the desktop in an O2 short link.
- Log daily trips to earn incentives. Log trips before the pay period closes. One suggestion is to have a calendar reminder for every Friday.
- The daily parking reservations are for employees on OHSU payroll.

Driving

OHSU.EDU/**PERMIT**

Demand > supply

Central sites are pay to park

- Mon – Fri, 8am - 5pm

ADA parking for employees

Enforcement

Employees: MyCommute Reservations

Short term/hourly parking

EV/Motorcycle



City of Portland has capped parking lot expansion for this reason and has worked with OHSU to provide us with fast, reliable access via Portland Aerial Tram.

- Capacity exceeds demand: 5,000 parking stalls yet over 11,000 people on campus each day.
- Pay to park week days MH, SoWa, and downtown locations 8-5 for anyone who is not a patient or patient visitor
- Special ADA parking, email commute@ohsu.edu
- Parking enforcement: License plate accuracy is essential; reserve before arriving on campus
- MyCommute reservations have variable price based on employees wage and the parking location. This is the least expensive parking option.
- If hourly parking is needed, pay stations are located on site. Visit ohsu.edu/permit for options.
- Visit our websites for more information about EV or Motorcycle parking.

We offer diverse incentives for employees, students and anyone with an OHSU badge to try alternatives to driving alone. Every person who chooses not to drive improves access for all.

OHSU Carpool

OHSU.EDU/CARPOOL


OHSU Carpool App

Connect with riders or drivers near you

Match per ride

Free to ride

Get paid to drive





OHSU Carpool is an app for employees, students and other members to share a ride to or from OHSU locations. The app will help match you with other OHSU commuters traveling to and from campus. Carpool as needed or daily.

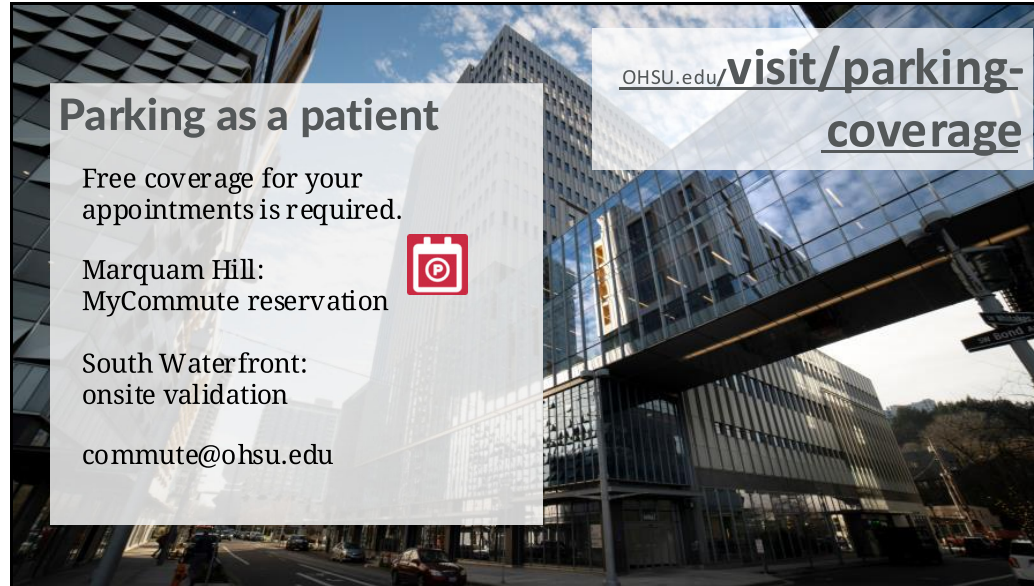
[App Store for iOS](#) [Google Play for Android](#)

How it works

- Download OHSU Carpool and sign up with your OHSU email address.
- Book your ride up to 14 days in advance.
- Your app will notify you of your match!
- After your trip, mark your ride as complete in the app to earn your incentive.

The app is free and has no fees. You will not be asked for any payment details.

- Drivers earn \$3 per weekday; Riders travel free
- Drivers are responsible for other costs (gas, parking, etc.)



[OHSU.edu/visit/parking-coverage](https://www.ohsu.edu/visit/parking-coverage)

Parking as a patient

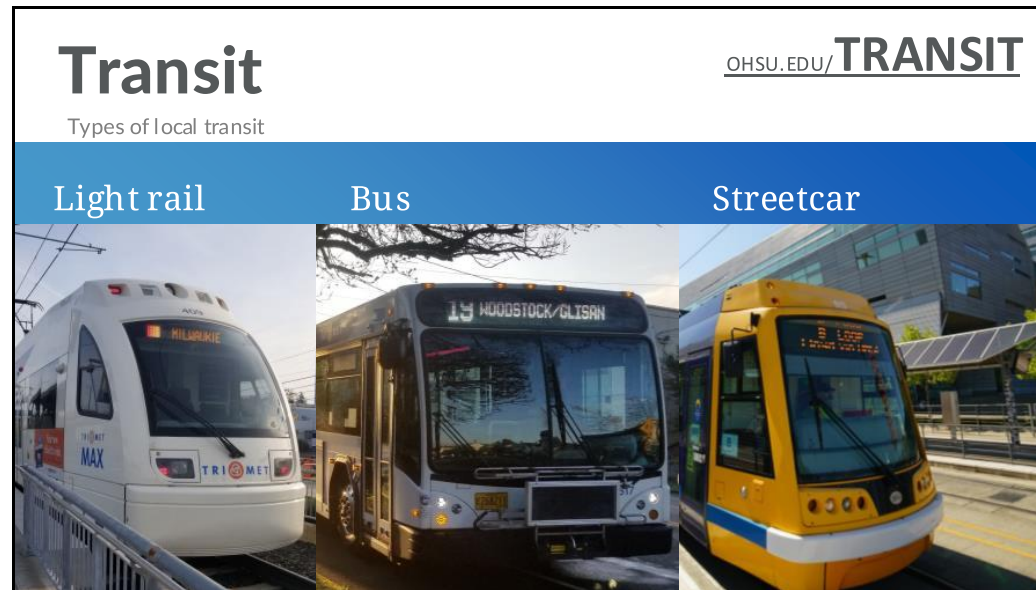
Free coverage for your appointments is required.

Marquam Hill:
MyCommute reservation 

South Waterfront:
onsite validation

commute@ohsu.edu

- Only park in patient parking when your vehicle is going to be on campus for a patient appt or to visit a patient
- Anyone driving the vehicle registered to the employee, must receive coverage for that vehicle when it is parked in patient parking
- Go to this url to learn how to get patient coverage: www.ohsu.edu/visit/parking-coverage
- Same day working and patient appointment, make permit reservation in advance and email commute@ohsu.edu for patient coverage



Types of transit to OHSU: Bus, light rail, streetcar.

Agencies:

- TriMet: Greater Portland metro region (tri-county)
- Portland Streetcar: Central east and westsides of Portland
- C-Tran: Vancouver, WA with express to Portland and OHSU
- Park and rides are a free options for those who live away from central Portland to reduce travel time, transfers, etc.
- Real time transit data also pushes to Google Maps, etc.
- Frequent service bus lines are increasing each year (15 min or less between buses). On Marquam Hill transit runs from ~5:30 am to after midnight, 7 days a week.

Transit

OHSU.EDU/TRANSIT

Discounts for OHSU members

Cash Incentive: \$1.50/trip

Streetcar: free with OHSU ID Badge

TriMet: cost up to \$50 per transit year

C-TRAN: reduced price

Park and rides: free



Explore stops, routes and more: www.ohsu.edu/transit

OHSU resources for transit:

- Earn \$1.50 for each weekday inbound trip logged
- TriMet HOP pass: at most \$50, first one may be less depending on your union.
 - In comparison, TriMet regular fare is \$100/month or \$5.60/day
- C-Tran is approx \$14 every two weeks
- Streetcar (and Tram) is free with an OHSU badge

More Info:

- www.trimet.org
- www.c-tran.com
- www.portlandstreetcar.org

Active Modes

ohsu.edu/COMMUTE

Many self-powered modes
are eligible for incentive

Badge access facilities

- Showers/towels
- Lockers



Earn daily incentives on MyCommute for eligible trips:

- \$1.50/trip for walk
- \$3.00/trip for bike and scoot

Showers: may be available, ask if want to know more

- SW Facilities: RPV, KCRB, RLSB

MH Facilities:


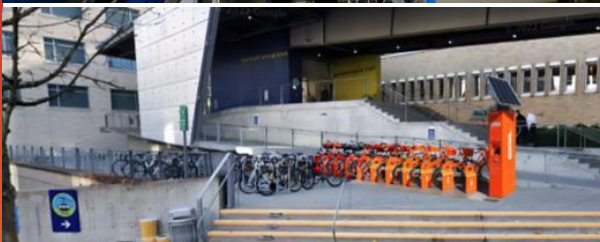

- No showers, towels, or lockers managed by CACS
- Student Center has a shower/towel/locker program
- Some depts manage their own facilities

Trails: visit www.ohsu.edu/walk to see the trails

Biking

OHSU.EDU/BIKE

- Cash incentive
- OHSU loaner bikes
- Bike share
- Bike subsidies:
\$100 to \$200
- Go By Bike
 - Valet
 - Repair

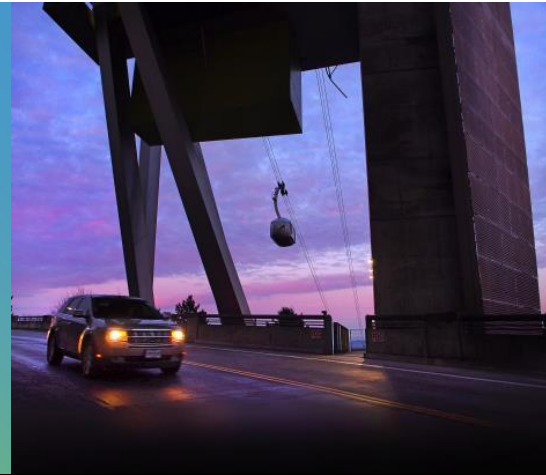
- Cash incentive: \$3.00/day to bike or scooter
 - Can log trips by similar devices if: legal on non-automobile multi-use paths AND zero-emission
- OHSU Bike Loaner Program: Borrow a regular bike for 30 days or e-bike for 14 days. The bikes are equipped with helmet, pannier, lights, bell, etc.. Free of charge
- Bike share:
- OHSU bike share is free-of-charge for short trips around OHSU's main campus
 - BikeTown is Portland's bike share for one way commuting: www.biketownpdx.com
- Bike Subsidies:
 - \$100 for purchase of a regular bike OR \$200 for an e-bike
 - Pick up the subsidy voucher at a Customer Service Center
 - Details: o2.ohsu.edu/campus-access-and-commute/getting-bike
- Go By Bike offers free valet: Mon-Fri 5:30am - 9:30pm (same at Tram weekday hours)
- Badge in bike facilities located on campus: o2.ohsu.edu/campus-access-and-commute/bike-facilities

Ride hail

[O2.OHSU.EDU](https://o2.ohsu.edu/lyft) / **LYFT**

Lyft Programs

- Lyft off
- Campus Connector



Lyft Off

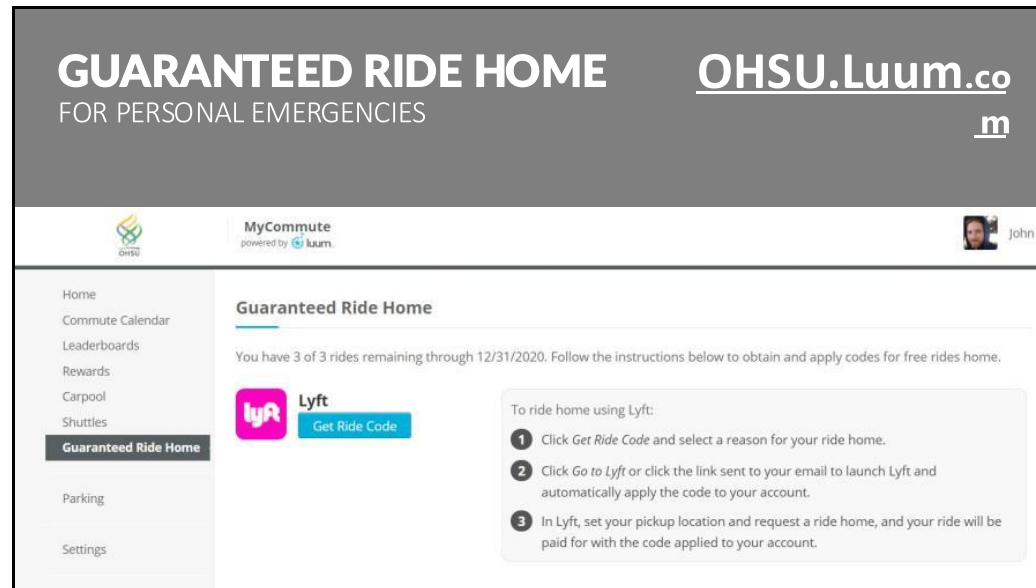
- For off peak commuting, available weekdays, 9pm to 5:30am
- One way ride per shift to or from central campus
- \$20/ride covered up to 20 times per month

Campus Connector:

- Rides between MH and SW outside of normal tram operating hours (not valid on holidays)

More Info: <https://o2.ohsu.edu/lyft>

- Campus connector \$30/ride 40 times per month



Guaranteed Ride Home provides peace of mind when you don't have a car on campus.

- 3 times per fiscal year, a Lyft credit for a personal emergency.
- Personal emergencies include things that affect you directly such as injury, illness, or a family emergency.
- Covers \$100 per ride
- Request the code before you request the ride
- For best experience, set up the Luum app and Lyft app.

More info: Guaranteed Ride Home not include community emergencies such as inclement weather.

The Luum app provides this service. These services are part of the MyCommute program, which you can also access on desktop via O2.

Patient access

[OHSU.EDU/VISIT](https://www.ohsu.edu/visit)

Keeping patients and visitors informed:

- Website kept up to date
- Find recommended parking and transit stops on building pages at [ohsu.edu/visit](https://www.ohsu.edu/visit)
- Walking directions to clinic from parking or transit may be provided by the clinic



www.ohsu.edu/visit is a resource to help patients, visitors or any commuters travel by a variety of modes to our campuses.

Once a visitor is on campus, departments are responsible for helping patients and visitors find their dept front desks.

- Make sure your departments websites are up to date
- Know basic knowledge about the closest patient parking and transit stops

Remote Work

OHSU.EDU/ **TELEWORK**

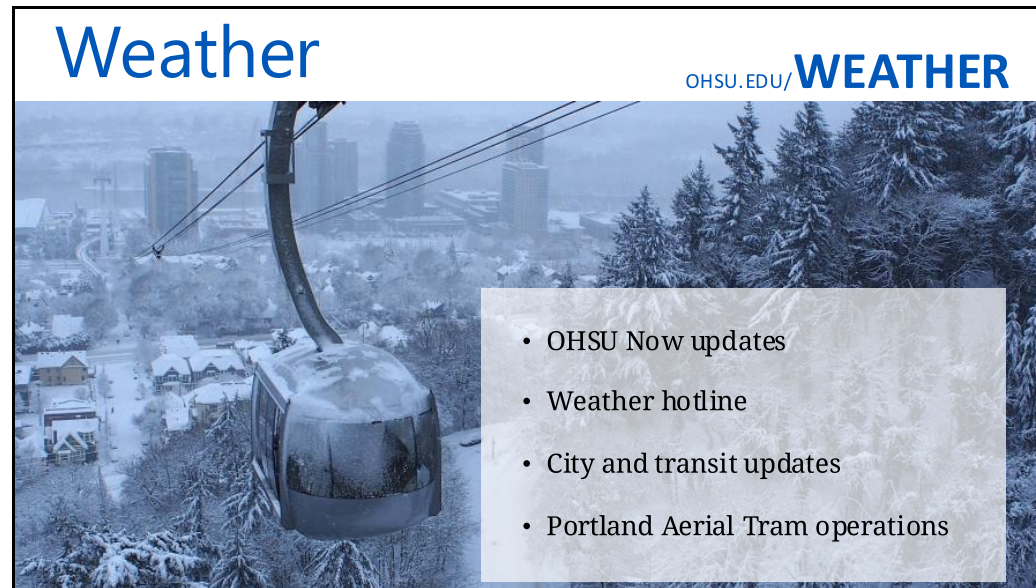
OHSU has a stated goal of providing telework and supporting resources as possible.

Onsite people are now using many of the same tools.

OHSU Anywhere



For more about Remote Work, join the OHSU NEO breakout session on remote work and/or visit ohsu.edu/telework



All of OHSU's resources for inclement weather can be found at: www.ohsu.edu/weather

- Weather hotline
- Announcements on now.ohsu.edu
- Interactive city map of snow routes and plow locations
- TriMet shares real time transit alerts and vehicle locations
- Portland Aerial Tram operations may be altered. In some circumstance, tram hours may actually be extended.

QUESTIONS?

[ohsu.edu/COMMUTE](https://www.ohsu.edu/commute)

CASH INCENTIVES TRANSIT PASS
BIKE FACILITIES WALK ROUTES
PARKING TRIMET C-TRAN STREETCAR
CAMPUS PARK AND RIDES RIDE SHARE
CARPOOL PATIENT ACCESS TELEWORK

SW Research Dr

We've covered a lot of topics. If you're reading this presentation after it has completed, visit www.ohsu.edu/commute for more information or contact commute@ohsu.edu



These are some of the most popular topics and their associated web pages.



Share your feedback on our presentation here: https://ohsu.ca1.qualtrics.com/jfe/form/SV_7NJ1t1GmwaNaHdk