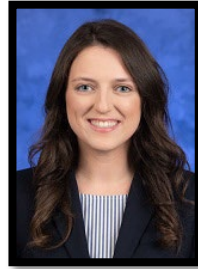




INTERNAL MEDICINE RESIDENCY

Current PGY-3's Class of 2025



Aya Agha

MD: Pennsylvania
State University
BS: University of
Pittsburgh (Biological
Sciences)



Ashly Albright

MD: University of
Queensland
MS: Columbia University
(Neuroscience &
Education)
BA: University of San
Francisco (Psychology)



**Jack Armitage
(PC)**

MD: Chicago Medical
School
BA: Whitman College
(Biochem, Biophys, &
Molecular Biology)



**Genevieve
Benedetti**

MD: OHSU
MPP: University of
Chicago
BA: University of
California – Berkeley
(Ethnic Studies)



**Apoorva
Bhaskara**

MD: University of
Arizona - Tucson
BS: University of
Arizona (Biomedical
Engineering)



Boris Chobrutskiy

MD: University of South
Florida
MS: University of
California – San Diego
(Biology)
BS: University of
California – San Diego
(Physiology)



Ellen Clark

MD: University of
Colorado
BA: Rollins College
(Biology & Studio Art)



Bryton Davis

MD: University of
Utah
MBA: University of
Utah
BS: University of
Utah (Biomedical
Engineering)



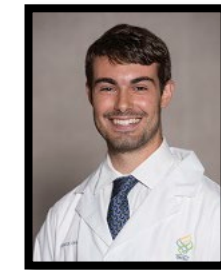
Iain Drew

MD: Quinnipiac
University
BS: Northeastern
University
(Behavioral
Neuroscience)



Nathaniel Earp

MD: OHSU
BS: University of
Oregon (Human
Physiology)



**Christopher Eden
(GH)**

MD: OHSU
BA: Colby College
(Biology &
Anthropology)



**Emma Fenske
(GH)**

DO: Burrell College of
Osteopathic Medicine
BS: University of New
Mexico (Medical Lab
Science)



Sarah Glazer

MD/PhD: UT Houston
BS: Columbia
University
(Biomedical
Engineering)



**Douglas
Goldstein**

MD: University of
Washington
BA: Pomona College
(Molecular Biology)



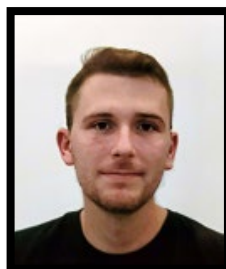
INTERNAL MEDICINE RESIDENCY

Current PGY-3's Class of 2025



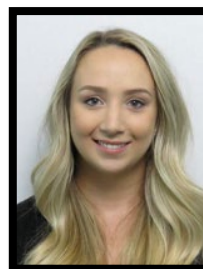
**Natalie Groshong
(PC)**

MD: OHSU
BS: Gonzaga
University (Biology)



Jake Herbert

DO: Nova SE
University
MMS: University of
South Florida
(Medical Sciences)
BS: Gainesville
(Psychology)



Hannah King

DO: Arizona College
of Osteopathic
Medicine
BS: University of
Washington (Biology-
Physiology)



**Dylan Mathis
(PC)**

DO: Philadelphia
College of
Osteopathic Medicine
BS: Webster State
University
(Biochemistry)



**Caroline
McCormick
(PC)**

MD: Medical College
of Wisconsin
BS: University of
Wisconsin
(Bacteriology)



Pristine Mei

MD: University of
Arizona - Phoenix
BS: Syracuse
University (Biology)



Raffael Mishaeve

MD: Sackler School of
Medicine
BS: University of
Toronto (Molecular
Biology)



**Dorothea Murray
(PC)**

MD: Touro University
- California
BS: Florida State
University (Biological
Sciences)



**Selinam Norgbe
(GH)**

MD: Creighton University
MBS: RWJ Rutgers
(Biomedical Sciences)
BS: Carleton University
(Honors Psychology)
BS: Carleton University
(Biology)



**James Oldenburg
(PC)**

MD: LSU New
Orleans
BS: LSU Baton Rouge
(Biological Sciences)



**Mason Paas
(PC)**

MD: University of
Kentucky
BS: Centre College
(Biochemistry &
Molecular Biology)



Emily Paton

MD: University of
Colorado
BS: Santa Clara
University (Public
Health)



**MaryJoe Rice
(GH)**

MD: University of
Maryland
MS: Virginia Tech
(Medical Engineering)
BS: Virginia Tech
(Bioengineering)



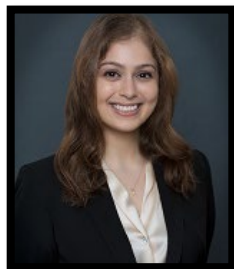
Dylan Rudd

DO: Arizona College
of Osteopathic
Medicine
BS: University of
California - Davis
(Exercise Biology)



INTERNAL MEDICINE RESIDENCY

Current PGY-3's Class of 2025



Abharika Sapru

MD: Washington
State University
BS: University of
Washington (Biology-
Physiology)



**Virginia Tan
(GH)**

MD: Quinnipiac
University
BA: University of
Chicago (Biological
Sciences)



Hannah Tandon

MD: University of
Nebraska
BA: Amherst College
(Chemistry)



Jessica Todsén

MD: Mayo Clinic -
Arizona
BSE: University of
Michigan (Chemical
Engineering)



Adam Urback

MD: Ben-Gurion
University
MSc: University of
Toronto
(Pharmacology)
BS: Queen's
University (Life
Sciences)



Ravneet Waraich

MD: Washington
State University
MBA: University of
Washington (Applied
Bioengineering)
BA: Whitman College
(Biochem, Biophys, &
Molecular Biology)



Misah White

MD: University of
Virginia
BA: University of
California – Berkeley
(Integrative Biology)



**Jeffrey Yung
(GH)**

MD: RWJ Rutgers
BA: Vanderbilt
University
(Neuroscience)